



## ISCOM5508-GP\* Series | Standalone GPON OLT

### Product Overview

ISCOM5508-GP is a compact GPON OLT with enhanced functionality. The device can support up to 8 GPON, 10 GE and 2 10GE interfaces. The complete modular designs of ISCOM5508-GP allow great flexibility in deploying, maintaining and expanding services at reduced CAPEX and TCO.

Designed for large enterprise, SME and residential fiber access, ISCOM5508-GP offers rich features to deliver triple-play services, simplify management, and provide high network reliability. Security is assured by implementations of Radius and/or TACACS+, while maximum network uptime is guaranteed by ring protection mechanism, real-time monitoring and hot-swappable redundant power supplies.

### Highlights

- Enable flexible delivery of Data, Voice and IPTV services for Enterprise, Residential and Industrial users
- Enhanced provisioning and management mechanisms for large-scale deployment & upgrade of ONTs
- Compact 1U modular design is suitable for providing value-added services with an economic budget
- Stable and reliable network assurance with redundant power supplies, 50ms Ethernet switching protection and PON protection.
- Rich L2 switching and L3 routing functionalities including flexible QinQ, QoS, IGMP, DHCP, RIP and OSPF
- Comprehensive OAM solutions based on 802.3ah, 802.1ag and Y.1731 for OPEX reduction
- IPv6 ready
- Eco-system warranty with low power consumption design and intelligent auto-speed fan module

### Specifications

Switching capacity: 96Gbps bi-directional  
Split ratio: up to 1:128  
Remote ONTs per device: up to 1,024  
Transmission distance: up to 20km (1:64)  
Basic system:  
4xGPON interfaces  
2x10G SPF+ interfaces  
2xGE SFP interfaces  
2x10/100/1000Base-TX RJ45 interfaces  
1xRJ45 SNMP interface  
1xRJ45 console interface  
1xfan module  
2xpower supply modules  
Expandable slot:  
4xGPON sub-card for slot.3  
4xGE SFP sub-card for slot.2 and slot.3  
Dimensions: 440(L), 266(W), 44.5(H) mm  
Operating temperature: 0 to 50°C  
Storage temperature: -20 to 60°C  
Humidity: 10 to 90%, non-condensing  
Lightning proof: AC/6kV; DC/1kV,2kV  
Hot-swappable power supply modules:  
110/240V AC; -48V (-36 to -72V) DC  
Power consumption: <70W (normal 56W)  
MTBF: >100,000 hrs

#### International Headquarters

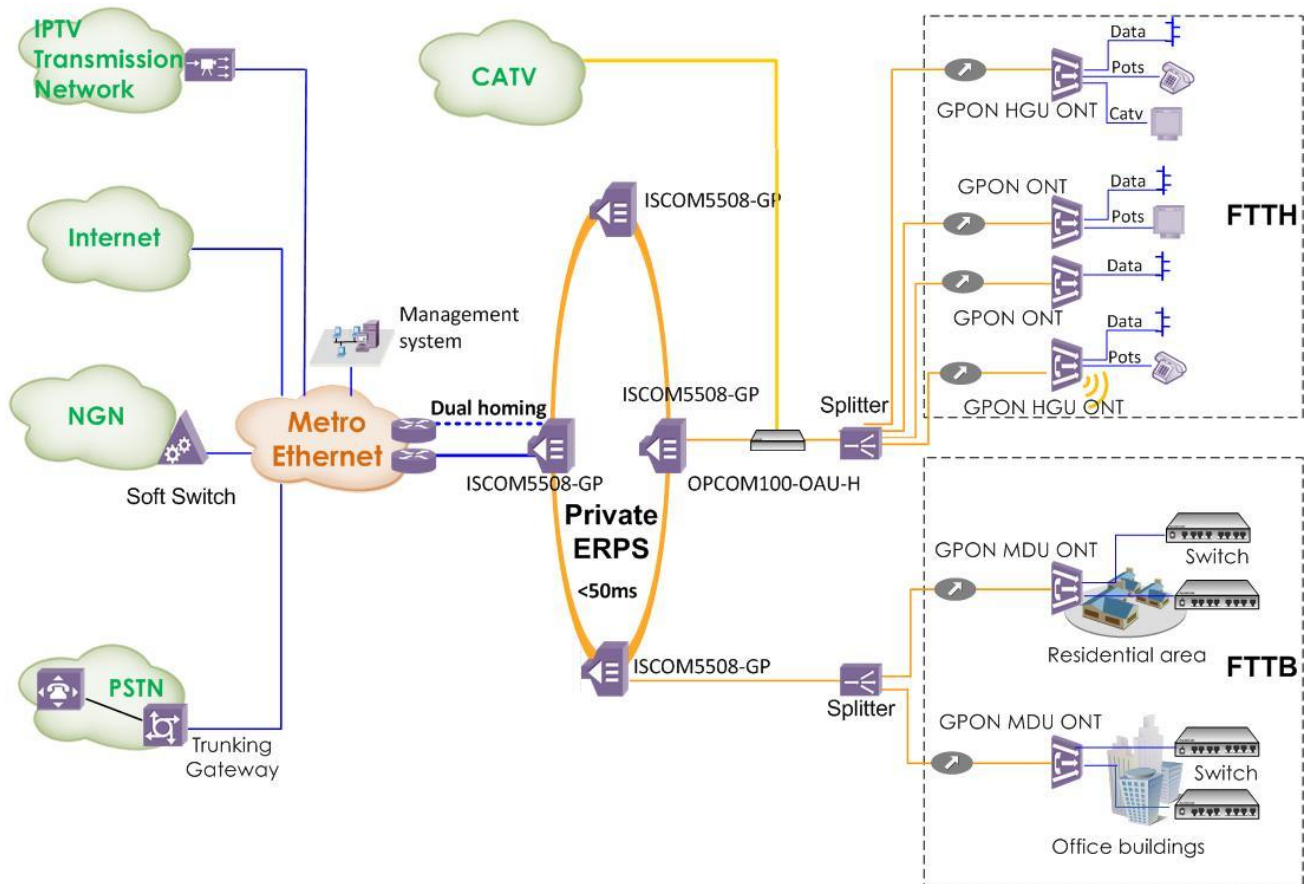
Building 2, No. 28 of the Shangdi 6th Street,  
Haidian District, Beijing. 100085, China  
Tel: +86 10 8288 3305  
Fax: +86 10 8288 3056  
www.raisecom.com

#### U.S.A. Headquarters

19337 US 19 North, Suite 306  
Clearwater, Florida. 33764. USA.  
Tel: +1 888 816 4808  
Fax: +1 727 547 9124  
Email: sales@raisecomusa.com

#### Raisecom Technology Co., Ltd.

Copyright©1999-2013  
All rights reserved  
Technical information is subjected to  
change without notice



### System Capacity

- MTU: 9k byte (default 1,526 byte)
- Switching capacity: 96Gbps bi-directional
- Backplane bandwidth: 28Gbps bi-directional
- Up to 32K MAC

### PON

- DBA in FIR, BIR or PIR modes with 64kbps granularity
- Link test diagnostic
- Provisioning, management and monitoring of remote ONTs
- ONT registration modes: SN, password, SN + password
- PON protection type B/C/D
- Bi-directional FEC

### Ethernet

- Support 4,094 VLANs (C-tag), stacked VLANs (QinQ, S-tag), VLAN mapping, 1:1 inner/outer VLAN translation and VLAN preservation
- Interface protection, port monitoring
- Transparent relay of BPDUs, LACP, LLDP and STP
- Support IGMP snooping v1/v2/v3, MVR, MVR proxy, and 1K capacity

### IP Services

- ARP
- DHCP relay, snooping
- IPv4, IPv6 (ACL, DHCP, MLD and interface)

### L3 Routing

- Support RIP v1/v2
- Support OSPF

#### International Headquarters

Building 2, No. 28 of the Shangdi 6th Street,  
Haidian District, Beijing. 100085, China  
Tel: +86 10 8288 3305  
Fax: +86 10 8288 3056  
www.raisecom.com

#### U.S.A. Headquarters

19337 US 19 North, Suite 306  
Clearwater, Florida. 33764. USA.  
Tel: +1 888 816 4808  
Fax: +1 727 547 9124  
Email: sales@raisecomusa.com

#### Raisecom Technology Co., Ltd.

Copyright©1999-2013  
All rights reserved  
Technical information is subjected to  
change without notice

- Static routing up to 128

#### Traffic Management

- Service classification per port/VLAN/CoS(DSCP)
- Support SP, WRR, DRR and SP+WRR scheduling modes, and up to 8 queues per port
- Bandwidth profile based on port, VLAN, CoS, DSCP, and IP Precedence
- Support flow-based filtering, redirection, mirroring, statics, policing and priority change
- Support DBA and SLA

#### Security

- ACL based on MAC, IPv4, IPv6, or user-define combinations, up to 2K
- Support ACL map
- Port-based mirroring, point-to-multipoint mirroring
- Support IP Source Guard, Dynamic ARP Inspection, and Anti-DDoS
- RADIUS, TACACS+
- Storm control (broadcast, multicast, DLF)

#### Reliability

- Link aggregation group (LAG) – up to 32 groups with 8 GE in each group, and six load balancing modes based on source/destination IP and/or MAC
- Support STP, MSTP, RSTP
- Port backup/isolation/protection
- Ethernet ring protection with a switchover time less than 50ms
- Port -based Ethernet local loop detection
- Fault propagation

#### Ethernet OAM

- Dying gasp message in case of power failure

#### Auto-Provisioning

- IEEE 802.1x port authentication

- Easy generation and distribution of massive configuration files using GUI-based toolkit

#### System Management

- Remote management via SNMP v1/v2c/v3, Telnet and SSH v1/v2
- Local management via console interface
- KeepAlive, RMON, LLDP, Syslog
- Port/VLAN/Cos-based statistics
- Alarm management
- SFP digital diagnostic management (DDM)
- FAN, CPU monitoring
- Voltage and temperature monitoring

#### Standard Compliance

- IEEE802.1Q (VLAN), 802.1ad (QinQ), 802.1D (STP), 802.1s (MSTP), 802.1p (CoS Priority), 802.1x (Security), 802.3ad (LAG), 802.3ah (EFM) , 802.1ag (CFM)
- ITU-T G.984 (GPON), Y.1731
- IETF RFC 1213 (DHCP), 1465(Static Routing), 1493 (Bridge MIB), 2865 (RADIUS), 2819 (RMON)
- IGMP v1/v2/v3
- RMON I and II standards
- SNMP v1/v2c/v3
- DHCP v4/v6
- CE and RoHS compliant

#### Ordering Information

ISCOM5508-GP-AC/D, 4xGPON, 2x10G SPF+, 2xGE SFP, 2x10/100/1000Base-T, 1xfan module, 2xAC power supply modules

ISCOM5508-GP-DC/D, 4xGPON, 2x10G SPF+, 2xGE SFP, 2x10/100/1000Base-T, 1xfan module, 2xDC power supply modules

ISCOM5508-GP-AC\_DC, 4xGPON, 2x10G SPF+, 2xGE SFP, 2x10/100/1000Base-T, 1xfan module, 1xAC+1xDC power supply modules

ISCOM5508-GP4A, GPON expandable slot

**ISCOM5508-GE4B**, GE expandable slot

#### International Headquarters

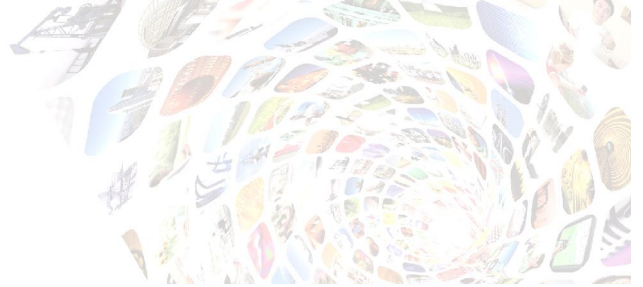
Building 2, No. 28 of the Shangdi 6th Street,  
Haidian District, Beijing, 100085, China  
Tel: +86 10 8288 3305  
Fax: +86 10 8288 3056  
www.raisecom.com

#### U.S.A. Headquarters

19337 US 19 North, Suite 306  
Clearwater, Florida, 33764, USA.  
Tel: +1 888 816 4808  
Fax: +1 727 547 9124  
Email: sales@raisecomusa.com

#### Raisecom Technology Co., Ltd.

Copyright@1999-2013  
All rights reserved  
Technical information is subjected to  
change without notice



RPA1101-SI-220S12, hot-swappable AC power supply

RPD1101-48S12, hot-swappable DC power supply

FANS306, hot-swappable intelligent fan

-

*Supplied Accessories (included):*

AC power cord, and/or DC connection kit

Console cord

Manual CD

-

*Optional Accessories (separate order):*

Hardware kit for mounting one unit on 19" rack

**Note:**

*\* Official release in Nov, 2013*

International Headquarters

Building 2, No. 28 of the Shangdi 6th Street,  
Haidian District, Beijing. 100085, China

Tel: +86 10 8288 3305

Fax: +86 10 8288 3056

[www.raisecom.com](http://www.raisecom.com)

U.S.A. Headquarters

19337 US 19 North, Suite 306  
Clearwater, Florida. 33764. USA.

Tel: +1 888 816 4808

Fax: +1 727 547 9124

Email: [sales@raisecomusa.com](mailto:sales@raisecomusa.com)

Raisecom Technology Co., Ltd.

Copyright@1999-2013

All rights reserved

Technical information is subjected to  
change without notice